



COLD CHAIN MONITORING & IOT SOLUTIONS

Safe · Stable · Reliable



Elitech Technology, Inc.

Tel: +1 408 844 4070
Email: amymeng@e-elitech.com
Add: 2528 Qume Dr, Ste 2, San Jose, CA 95131 USA

Elitech (UK) Limited

Tel: +44 208 858 1888
Email: Billings@elitech.uk.com
Add: Unit 13 Greenwich Centre Business Park, 53 Norman Road London SE10 9QF

Elitech Brasil

Tel: +55 51 3939 8634
Email: antonio@elitechbrasil.com.br
Add: 104 Osvaldo Cruz, Niterói, Canoas/RS, Brazil

Elitech Thailand

Tel: +66 083 982 7550
Email: Thailand@e-elitech.com
Add: 1/26 Moo 5, Tha Sa-An Sub-district, Bang Pakong District, Chachoengsao Province 24130

Jiangsu Jingchuang Electronics Co., Ltd

Tel: +86 516 6890 2808
Email: sales@e-elitech.com
Add: No.21 East Zhujiang Rd, Tongshan Economic Development Zone, Xuzhou, Jiangsu, China



Exterior view of the Elitech Technology, Inc.



Elitech Manufacturing Base

About Us

Elitech Technology, Inc.

Elitech, always adhering to the philosophy of "Innovation Preceding All", has its headquarters in the heart of Silicon Valley, San Jose, California. Our company has established wholly-owned subsidiaries in various parts of the world, such as London, UK, China, and Brazil, and has built a large-scale super factory in the Asia-Pacific region. Elitech's trademark is registered in more than 60 countries and regions worldwide, and its business network covers more than 120 countries and regions.

A selection of Elitech products has been recognized by the World Health Organization (WHO) with PQS (Prequalification) status and has successfully passed rigorous international certifications, including FDA, UL, ETLand CE.

Elitech's megafactory stands out in the industry with its exceptional level of automation, producing over 7.6 million smart terminals annually.

The Cold Chain IoT Division focuses on core technologies such as multi-functional digital temperature chips and highly reliable data storage and transmission. It specializes in developing multi-source sensing products including digital temperature tags, temperature and humidity data loggers, and IoT real-time data loggers. Integrating IoT communication, cloud platforms, and big data analysis technologies, it provides services such as full-link smart monitoring systems, system integration, cold chain validation, and equipment calibration. These are applied in diverse scenarios including food and pharmaceutical cold chains, industrial cold chains, data centers, transportation, and low-altitude economy. The division is committed to becoming a global leader in the field of cold chain IoT.

We integrate lean production management with cutting-edge information technology, digitalization, and intelligent manufacturing techniques, committing to technological innovation and intelligent production. This allows us to provide our global customers with unique product experiences that exceed expectations and create surprises.

R&D Center & Certification



FDA 21 CFR Part 11 Compliance Elitech WHO PQS E006 CE ROHS IOS System Certification



Global layout and Services

Elitech has several subsidiaries in several countries and more than 120 agents worldwide, providing customers with technical support and comprehensive global service.



Data Logger Megafactory



CNAS Testing Laboratory (ISO / IEC 17025: 2017(CNAS-CL01))



Table of Contents



Elitech iCold	05-12
Single Use Real Time Data Logger	13-14
Disposable Cold Chain Transportation Monitoring Real Time Data Logger	
Single Use Data Logger	15-18
Disposable Dry Ice Data Logger	
Flagship Model Disposable USB Data Logger	
Standard Model Disposable USB Data Logger	
Ultra-compact Disposable USB Data Logger	
Reusable Data Logger	19-25
Standard Model Reusable USB Data Logger	
Magnetic Refrigerator Data Logger	
Waterproof Model Reusable USB Data Logger	
Pen-style Waterproof Model Reusable USB Data Logger	
Industrial Large Screen Temperature and Humidity Data Logger	
Multi Use Real Time Data Logger	26-29
Detachable Aviation Plug Magnetic Real Time Data Logger	
Split-type LoRa Master-Slave Units Real Time Data Logger	
Wi-Fi Real Time Data Logger	
Portable Temperature and Humidity Monitoring Solution	
Digital Temperature Label	30
Disposable Temperature Recording Label	
Sensor Overview	31-32

About Elitech iCold Cloud



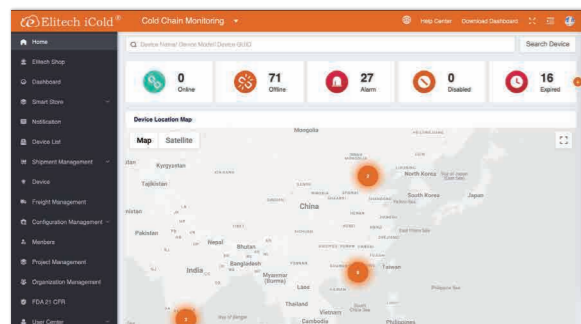
- Real-time data monitoring
- Emails warning and alarm
- Historical data record and query, data analysis report export
- Electronic signature and endorsement for FDA CFR 21 Part 11

Elitech iCold is a monitoring cloud platform serving the cold chain industry based on terminal intelligent devices. Leveraging technologies such as the Internet of Things (IoT), cloud computing, big data analysis, and intelligent temperature control, it is rooted in the cold chain safety monitoring industry and builds a global cold chain safety cloud service sharing platform. It provides customers with safe, reliable, compliant, and high-quality cold chain safety cloud services. Its business covers fields like life sciences and food cold chain, safeguarding industries such as pharmaceutical and food safety.

Function Introduction

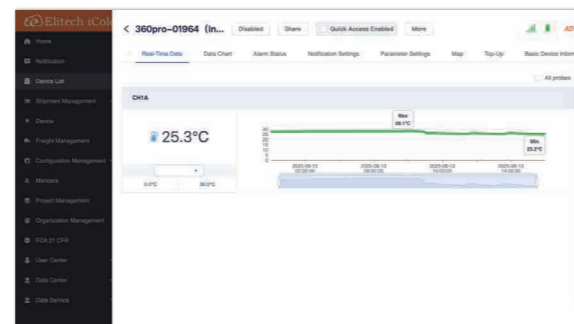
● Equipment Overview

Features an overview of equipment classification map, an overview of working status, etc.



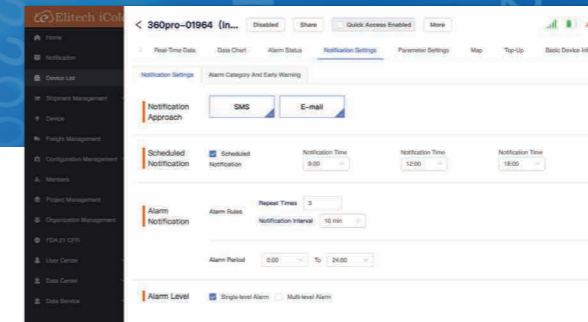
● Equipment Status

Overall equipment operating data statistics and display.



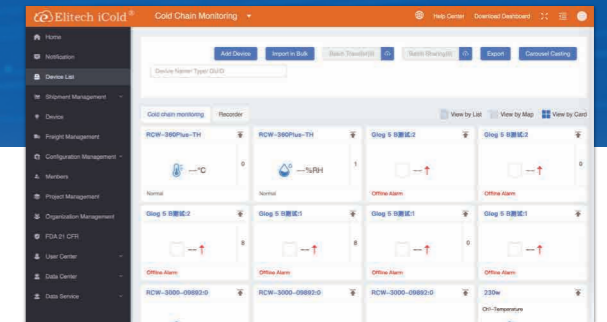
● Multiple Alarms

Supports SMS, email and other alarms, with graded notifications to users and maintenance personnel.



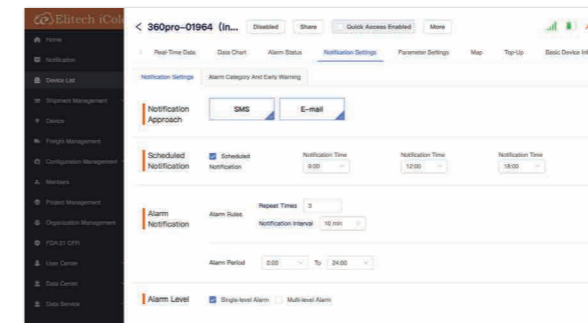
● Data Visualization

Visual display of temperature and humidity, location trajectory, and system operation data.



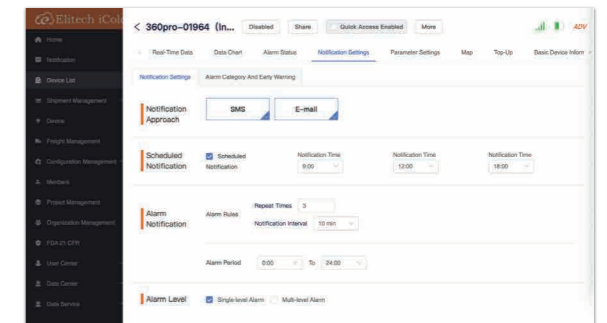
● Data Analysis Report

Can generate system analysis reports / PDF reports.



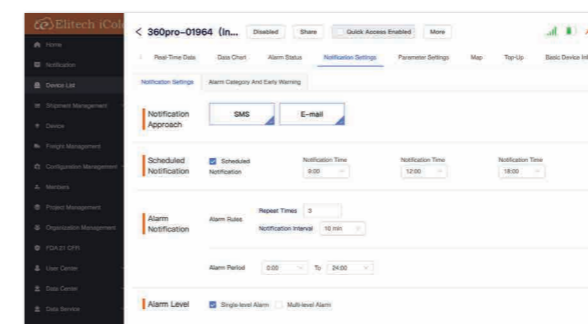
● Waybill Management

Control and track all cold chain transport links.



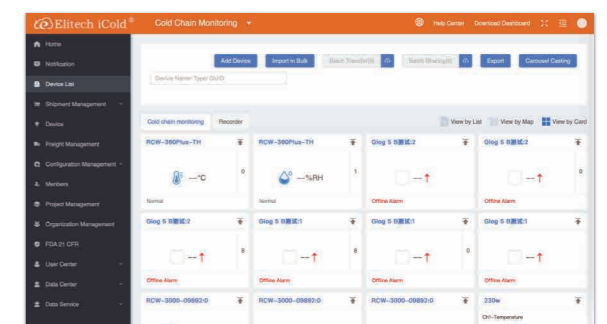
● Equipment Management

Configure equipment parameters, their upper / lower limits, recording and upload intervals.

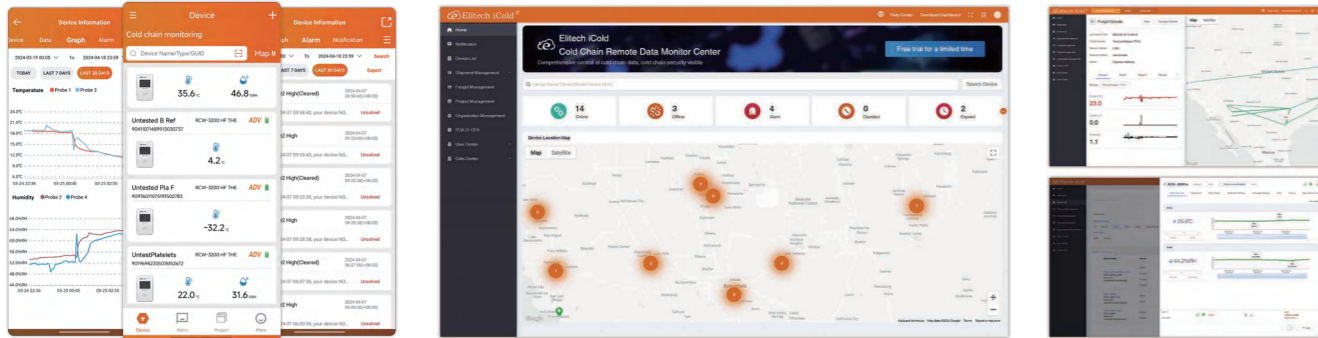


● System Integration

Interfaces with customers' ERP, MES, TMS, etc., and accesses third-party info like marine / air shipping, weather, location.



Elitech iCold Cloud Global cold chain security monitoring cloud platform



Elitech iCold is based on multi-source sensing technology and serves the global life sciences and food cold chain. Using multi-sensor monitoring, the Internet of Things, cloud computing, big data analysis and AI artificial intelligence and other technologies to monitor the production, storage, transportation, sales of pharmaceutical and food cold chain process, Provide customers with safe, compliant and assured - station solutions, and build a global cold chain security cloud service sharing platform.



Multi-source Sensing

Temperature and humidity, moisture content, PH, light, pressure, Vibration, current, voltage. Flow rate, refrigerant leakage, Positioning, trajectory, vision. Infrared, wind, CO₂



ECO Terminal

Secondary networking recorder, repeatable networking recorder, Digital temperature label, controller, detector



Core algorithms and AI

Fresh storage simulation algorithm; ECO² energy saving algorithm
Fault sensing and algorithm



Industry scheme

CDC, smart retail stores, Cold chain industrial park, international logistics cold chain transportation

The whole process cold chain monitoring core program

Pharmaceutical / phytophthora / reagent cold chain Internet of Things solution, pharmacy cold chain Internet of Things solution. Cold chain IoT solutions for hospitals, cold chain logistics and transportation Internet of Things solutions, provincial and municipal CDC docking solutions.

A cloud service platform focusing on cold chain security and data transparency

Multi-function

Real-time monitoring, alarm management, equipment positioning, predictive maintenance, user management

Safe enough

Approved by FDA. Comply with GSP real-time monitoring, Four times alarm to ensure the safety of drugs and food

Full traceability

Track monitoring, on-site whole-process data visualization, and real-time data continuous linking

Easy connection

4G / WiFi / LoRa and other communication methods. Support wechat, app.mail, Data analysis and other functional modules, to provide users with all-round monitoring. Telephone and other alarm information, provide a complete third-party data interface

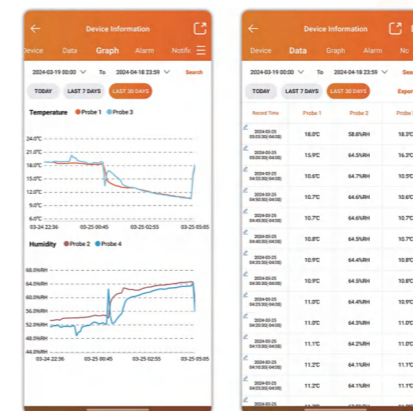
Support privatized platform deployment

Our platform can be deployed to the customer's private cloud according to customer needs to achieve independent operation

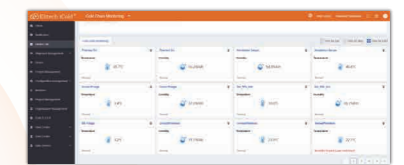
Cloud Customization

Quickly own your own cloud platform

Enterprise Logo brand display, customized enterprise APP and enterprise designated domain name



Mobile terminal management (APP& wechat)



Control center remote monitoring



Client management (B/S architecture)



About ElitechLog



Graph

Display the selected or historical data in graph. Up to 30 datas can be displayed in the graph simultaneously, it is convenient for users to compare temperature and humidity changes of multiple curves. The graph supports stepless zooming and dragging, and user can click on the button in the upper left corner of the graph to zoom in, zoom out and drag the curve.

- Export data and generate analysis reports
- Data analysis in parallel for multiple devices
- Electronic signature for FDA CFR 21 Part 11
- Data sharing on Cloud

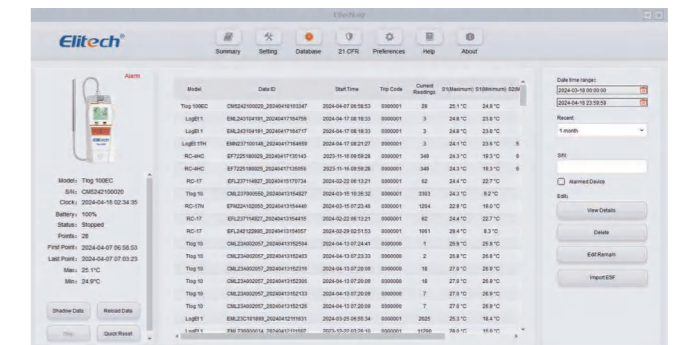
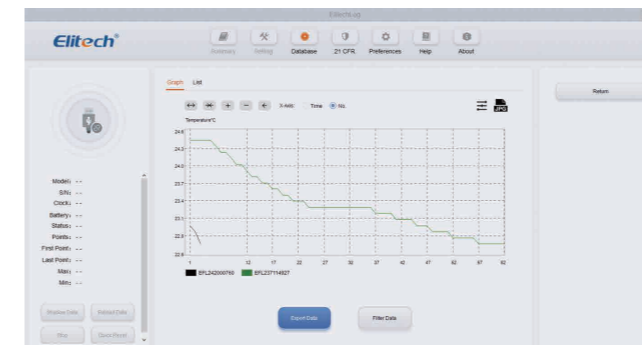
Multiple Routes Graph

Various kinds of temperature and humidity charts and related data analysis.

Data List

Displays the data in the list. It can display more than the limit and record more data in different colors, and can list up to 30 loggers.

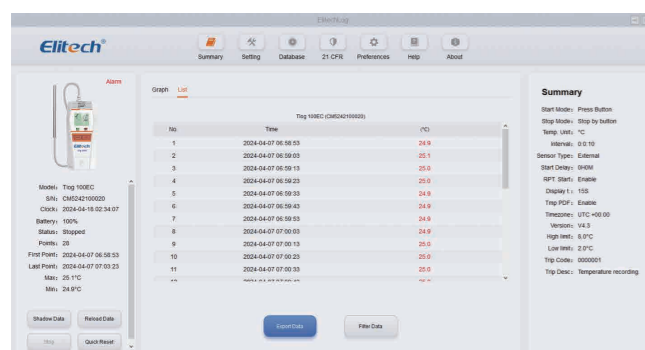
ElitechLog is compatible with RC / LogEt series data loggers. It supports parameter settings, data download, report generation and export, and helps to judge the compliance and effectiveness of shipments in the logistics process. All series data logger supports data storage on Cloud with ElitechLog. It complies with FDA CFR 21 Part 11 requirements and supports Win and MAC versions.



Detailed Functions of PC

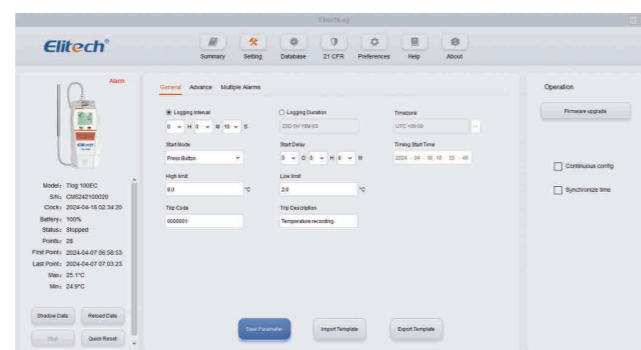
Statistics

Read the current logger's status and parameters. Summarize and display the status information (alarm value, maximum and minimum value, start time, stop time, etc.).



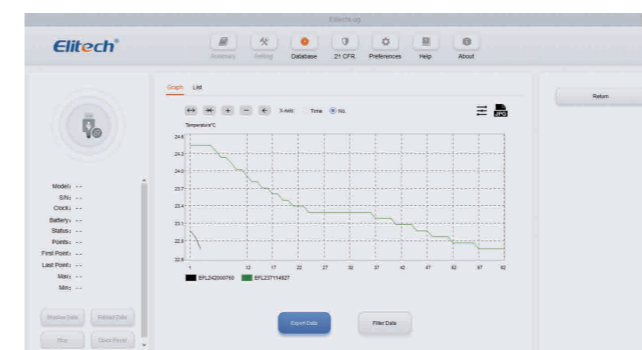
Parameter Settings

Read the logger's parameters and synchronize the current or latest parameters settings to the page display, or set the parameters manually and save to the logger.



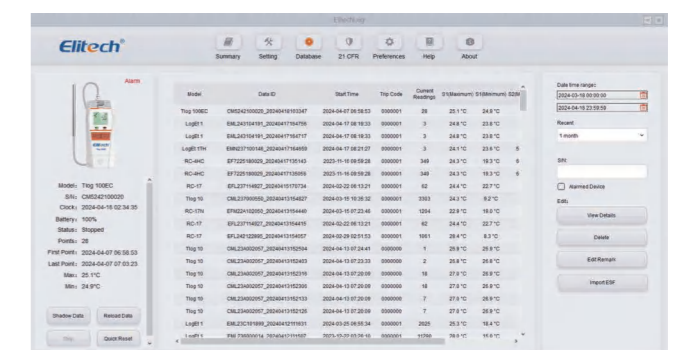
Multiple Routes Graph

Data display and tracking in accordance with FDA standards, including account numbers, endorsements, data, software system modifications, etc.



Data List

Display and trace user's endorsement on the current data, including time, content, endorsement account information, etc.



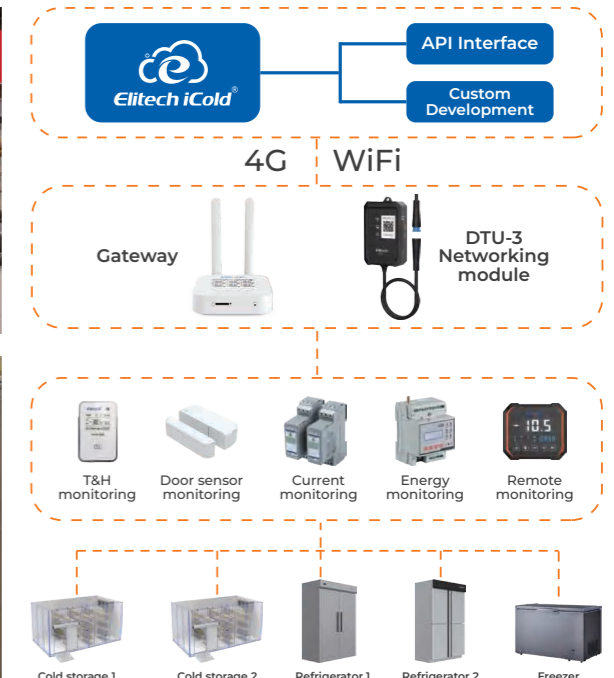
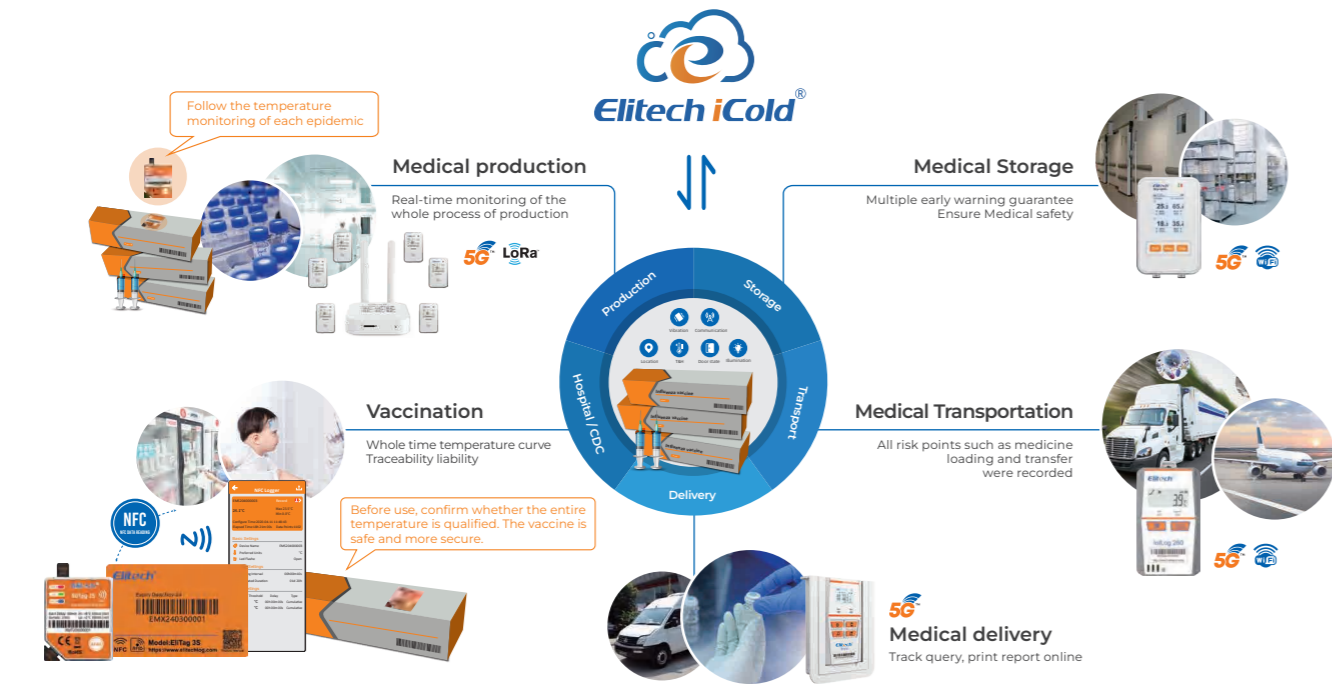


Life Science Cold Chain

Food cold chain

Elitech iCold Pharmaceutical Cold Chain Solution is mainly oriented to the field of life sciences. It performs network monitoring on different aspects of the production, storage, transportation and sales of vaccines and special drugs, and uploads the monitored temperature and humidity data to the cloud in accordance with the same national standards. The platform can be connected to the cold chain monitoring platform in order to monitor, collect statistics, analyze and share information on the collected data, so as to ensure the safety, compliance and full-process monitoring of all aspects of Medical cold chain.

Elitech iCold can provide a full-process solution for the food cold chain. It uses IoT big data, cloud computing and other technologies to supervise every link of food production, transportation, storage and other aspects in real time through intelligent hardware, monitor temperature and humidity changes, and ensure food safety, reducing food loss and improving transportation rate. It also provides solutions for chain catering stores. Through the monitoring of store facilities and equipment, the headquarters can manage all its stores, control food safety conditions, grasp the energy consumption of cold storage and freezers, and provide early warning of abnormal trends.



Compliance
Passed FDA certification and complies with international pharmaceutical industry standards.

Security monitoring
Monitor all aspects of raw material procurement, production, research and development, storage and transportation.

Networked alarms
After the sensor is triggered, the platform is manned 24 hours a day to deliver notifications in a timely manner to ensure drug safety.

Compliance
Real-time analysis of data is performed through big data cloud computing to form reports, which can be printed and exported on-site.

Waybill management
Real-time viewing of drug temperature, humidity, and transportation trajectories enables multiple early warnings and data backtracking.

Compliance
Suitable for temperature and humidity monitoring in medical warehouses, medical boxes, medical cabinets, medical laboratories and other places.

Temp & humi monitoring
Achieve accurate control of temperature and humidity in cold storage / refrigerator and collect historical data records to ensure food safety

Food safety monitoring
According to the food type and storage requirements, simulate the core temperature of the food and provide early warning of abnormalities.

Compressor monitoring
Monitor compressor current, voltage, overload and other issues to ensure equipment operation and report abnormal conditions in a timely manner.

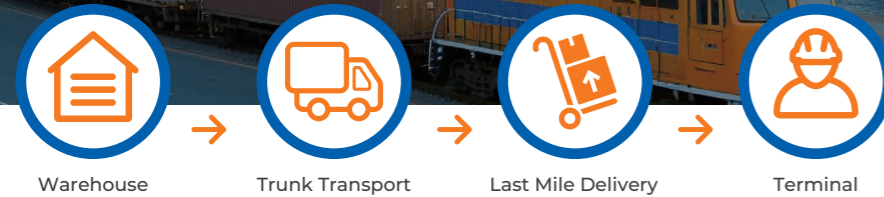
Door status monitoring
Monitor and record the status of the door switch of the monitored cold storage or equipment, and the door switch data can be traced.

Energy consumption monitoring
Monitor and analyze cold storage energy consumption through the ECO² cloud computing algorithm to achieve energy saving.

System integration
Integrate a variety of sensors and upload monitoring data to the cloud platform to achieve centralized management and control of multiple stores.

Elitech iCold platform solutions

- Improve logistics efficiency, cargo safety real-time grasp
- GLog 5 is combined with global freight management functions that not only track the temperature and location of goods in real time, but also achieve full transparent monitoring of the entire logistics order, enabling lean logistics management and improving operational efficiency. Connect upstream and downstream, collaborate online, and enhance customer experience.



Disposable Cold Chain Transportation Monitoring Real Time Data Logger

Glog 5



Overview

Glog5 is a disposable real-time recorder that supports global 4G communication, supporting various sensors such as temperature, humidity, light, vibration, positioning, carbon dioxide, etc. It can view data in real time through the Elitech iCold platform, support flight mode and electronic fence, three-color indicator lights and LCD screen can visually display the current status, support up to 3 repeated enablements, and support shadow data and automatic generation of PDF reports. Widely used in containers, refrigerated containers, refrigerated trucks and other cold chain transportation scenarios in various industries.

Features

- Multi-source sensing: temperature, humidity, lighting, vibration, positioning, CO₂, and more
- 24-Hour remote data viewing: 4G global communication, real-time monitoring data
- Flight Mode / Electronic Fence: Custom Area Open, Manual Open, Timed Open, Electronic Fence
- Three-color indicator light + LCD screen: real-time intuitive display of device status
- Misopening design: can be opened up to three times during the shelf life to reduce the risk of misoperation
- Shadow data: device forgets to turn on or stops by mistake, passively records data to ensure data integrity
- Support for automatically generating PDF reports

Model List

Configuration	T	TH	CO ₂	TLE
Probe Type	Built In Temperature	Built In T&H	External Carbon Dioxide T&H + Built In T	External Ultra Low T + Built In T
Temperature Range	-30°C~70°C		Built In: -30°C~70°C; External: -40°C~85°C	Built In: -30°C~70°C; External: -200°C~150°C
Temperature Accuracy	±0.5°C (-40°C~85°C); ±1°C (-100°C~150°C); ±2°C (Others)			
Temperature Resolution	0.1°C			
Humidity Range	/	0~100%RH		/
Humidity Accuracy	/	±5%RH		/
Humidity Resolution	/	0.1%RH		/
Other Probe	/	Carbon Dioxide Sensor		/
Measuring Range	/	0~100vol%		/
Measurement Accuracy	/	±2vol% (0~30vol%); ±5vol% (Others)		/
Resolution	/	0.1%		/

Specification

Memory Capacity	32000	Protection Class	IP65
Data Interface	Type-C	Dimension	103×61.3×30mm
Battery Type	3V (Disposable Lithium Manganese Battery 4800mAh)	Weight	135g
Shelf Life	2 Years	Working Environment	-30°C~70°C
Battery Life	30 / 60 / 90 / 120 Days	Button	Flight, Start
Communication	Type-C Interface, 4G	Installation Method	Hanging
Location Mode	LBS / GPS	Adaptation Software	ElitechLog, ElitechiCold

Transport report

Connect with warehouse management, improve logistics efficiency.

Dispatch Bulletin Board

Insight into progress and timeliness, timely handling of anomalies.

Nodal fence

Vehicle entering node fence, performance information basis.

Safety Transportation Report

Cold chain transport data security report, cargo delivery responsibility definition.

Function and value of the solution

Safety and compliance

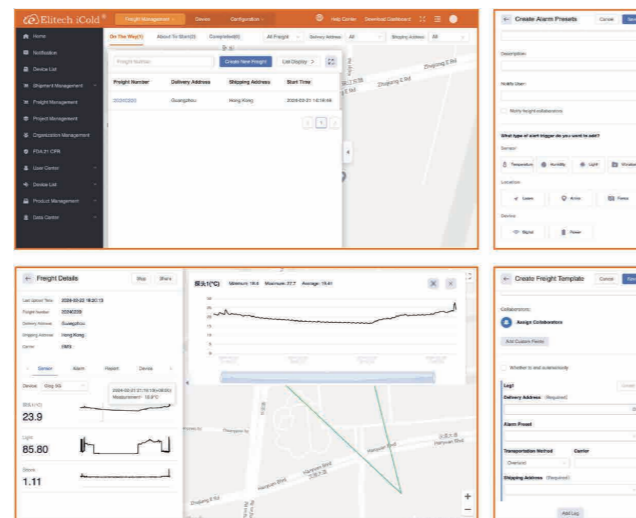
The data is transparent, visible and traceable throughout the process to prevent cold chain risks and ensure the safety and compliance of goods and supply chains.

Cost reduction and efficiency

The integrity of the entire data of the Internet of Things helps suppliers and operators to seamlessly connect and improve operational efficiency.

Sustainability of supply chain

Reduce unnecessary waste of goods and their impact on the environment, and build a global green future.



Disposable Dry Ice Data Logger

LogEt 6



Flagship Model Disposable USB Data Logger

LogEt 1



Overview

LogEt 6 proless dry ice data logger. Equipped with ultra-low temperature sensors as standard, the entire machine can directly record temperature in an environment of -85°C. It can export reports or automatically generate PDF files through data center software, 16000 points, 30 days of battery life in dry ice, 2 years of shelf life, shadow data function.

Features

- Built in ultra-low temperature sensor: The entire machine is designed for ultra-low temperatures and can be placed in a dry ice environment
- Protection class: IP65
- Low power consumption: up to 30 days
- Automatically generates the secure PDF reports

Model List

Product Model	LogEt 6
Configuration	PT
Probe Type	Internal Temperature
Temperature Range	-85°C~50°C
Temperature Accuracy	±0.5°C (-40°C~85°C) ; ±1°C (Others)
Temperature Resolution	0.1°C

Specification

Memory Capacity	16000	IP Code	IP65
Data Interface	USB A	Dimension	100×46×19mm
Battery Type	LSI4250 Lithium Battery	Weight	60g
Shelf Life	2 Years	Working Environment	-85°C~50°C
Battery Life	30 Days (Log Interval 5min)	Button	Start, Stop
Communication	USB Interface	Software	ElitechLog

Overview

LogEt 1 is a small and portable disposable recorder. Standard built-in single temperature sensor, USB A interface design, convenient data reading, can automatically generate or export PDF reports through data center software. LCD screen can visually display data, protection level up to IP67, 16000 sets of storage, 180 days long battery life. Widely used in food and drug storage and transportation, such as refrigerated boxes, refrigerated trucks, containers and other scenes.

Features

- Comprehensive protection design: protection level up to IP67
- Low-power design: ultra-long battery life, 180-day long cycle record
- Support for automatically generating PDF reports
- Special event tagging: During the recording process, special events are manually tagged

Model List

Configuration	T	TH
Probe Type	Built In Temperature	Built In Temperature and Humidity
Temperature Range	-30°C~70°C	
Temperature Accuracy	±0.5°C (-40°C~85°C) ; ±1°C (Others)	
Temperature Resolution	0.1°C	
Humidity Range	/	0%~100%
Humidity Accuracy	/	±3%RH (20~80%RH) , ±5%RH (Others)
Humidity Resolution	/	0.1%RH
Other Sensors	Light Sensor	

Specification

Memory Capacity	16000	Protection Class	IP67 (LogEt 1) ; IP65 (LogEt 1TH)
Data Interface	USB A	Dimension	97×53×8mm
Battery Type	CR2450	Weight	65g
Shelf Life	2 Years	Working Environment	-30°C~70°C
Battery Life	180 Days (12 minutes between records)	Button	Power Supply
Communication	USB Port	Software	ElitechLog

Standard Model Disposable USB Data Logger

RC 17



Ultra-compact Disposable USB Data Logger

Tiny USB



Overview

RC 17 is a compact and portable disposable recorder. It comes standard with a built-in single-temperature sensor and a USB A interface design, which facilitates data reading. It can automatically generate or export PDF reports through the data center software. It supports IP67 protection, has a storage capacity of 16,000 groups, and offers an ultra-long battery life of 180 days. It is widely used in the storage and transportation of food and drugs, such as in scenarios like refrigerated boxes, refrigerated trucks, and containers.

Features

- Comprehensive Protection Design: Rated up to IP67 for dust and water resistance
- Low-Power Design: Ultra-long battery life supporting 180 days of continuous data logging
- Automatic PDF Report Generation: Seamlessly generates compliant reports
- Multiple Configurations Available: Standard, NFC-enabled, and Foam-Encased models

Model List

Product Model	RC 17	RC 17N	RC 17R
Configuration	T		
Probe Type	Built In Temperature		
Temperature Range	-30°C~70°C		
Temperature Accuracy	±0.5°C (-40°C~85°C) ; ±1°C (Others)		
Temperature Resolution	0.1°C		

Specification

Product Model	RC 17	RC 17N	RC 17R
Memory Capacity	16000		
Data Interface	USB A		
Battery Type	CR2450		CR2032
Shelf Life	2 Years		18 Months
Battery Life	180 Days (with a recording interval of 18 minutes)		
Communication	USB Port	USB Port, NFC	USB Port
Protection Class	IP67		
Dimension	93×58×8mm		93×58×6mm
Weight	20g		10g
Working Environment	-30°C~70°C		
Button	Power Supply		
Adaptation Software	ElitechLog		

Overview

Tiny USB is an ultra-small and portable one time recorder. Standard built-in temperature sensor, USB A interface design, convenient data reading, can automatically generate or export PDF reports through data center software. Protection level up to IP67, 10,000 sets of storage, 90 days battery life. Widely used in food and drug storage and transportation, such as refrigerated boxes, refrigerated trucks, containers and other scenarios.

Features

- Ultra-small size design: ultra-small, ultra-light, ultra-thin, extremely portable
- Comprehensive protection design: protection level up to IP67
- Low-power design: long battery life, 90-day long cycle record

Model List

Configuration	T
Probe Type	Built In Temperature
Temperature Range	-30°C~70°C
Temperature Accuracy	±0.5°C (-40°C~85°C) ; ±1°C (Others)
Temperature Resolution	0.1°C

Specification

Memory Capacity	10000
Data Interface	USB A
Battery Type	CR2032
Shelf Life	2 Years
Battery Life	90 Days (with a recording interval of 15 minutes)
Communication	USB Port
Protection Class	IP67
Dimension	48×32×9mm
Weight	9.6g
Working Environment	-30°C~70°C
Button	Power Supply
Alarm Method	LED
Software	ElitechLog

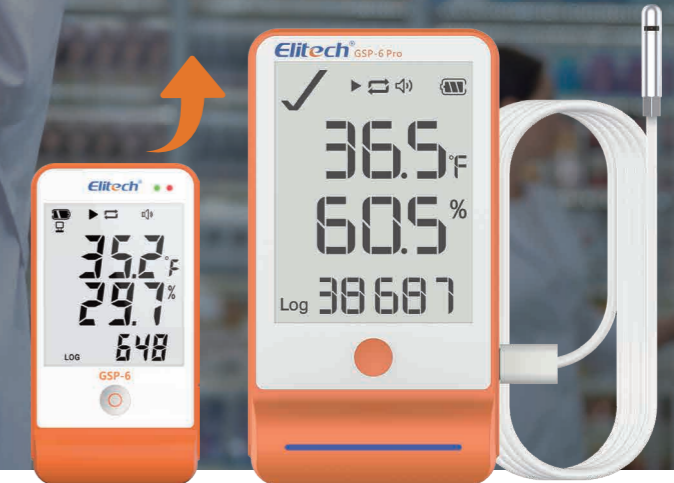
Standard Model Reusable
USB Data Logger

RC 4Pro



Magnetic Refrigerator
Data Logger

GSP 6Pro



Overview

RC 4Pro is a compact and portable repetitive data logger. It is equipped with an internal / external single temperature sensor and features a 2.5mm headphone interface for connecting an external probe. Reports can be exported through the data center software or automatically generated as PDF / CSV files. It complies with GxP regulation, has a storage capacity of 64,000 points, a 180-day battery life, and supports the function of pre-shadow function and post shadow function function. It is widely used in scenarios such as cold boxes, refrigerated vehicles, cold storage rooms, and laboratories.

Features

- Comply with the GxP design requirements of the pharmaceutical and food industry
- It can be monitored either internal probe or external probe, and the recording method is flexible
- Low-power consumption design, extremely long battery life, 180-day long-term data recording
- PDF / CSV reports exported automatically

Model List

Product Model	RC 4 Pro	RC 4H Pro
Configuration	T	TH
Probe Type	Internal + External Temperature	Built In Temperature and Humidity + External Temperature
Temperature Range	Internal: -30°C~70°C; External: -40°C~85°C	
Temperature Accuracy	±0.5°C (-40°C~85°C) ; ±1°C (Others)	
Temperature Resolution	0.1°C	
Humidity Range	/	0%~100%
Humidity Accuracy	/	±5%RH
Humidity Resolution	/	0.1%RH

Specification

Memory Capacity	64000	Weight	51.2g
Data Interface	Type-C	Working Environment	-30°C~70°C
Battery Type	CR2450	Button	Home Button
Battery Life	180 Days (18 minutes logging interval)	Alarm Method	Buzzer
Communication	Type-C	Installation Method	Hanging Holes, Magnetic Bracket
Dimension	91.5×48×20mm	Software	ElitechLog

Overview

GSP 6Pro is a multi use data logger that supports Bluetooth connection. It consists of a main unit and a probe. The main unit has a magnetic back design, which can be adhered to the metal shelves of the refrigerator. The probe is connected to the main unit via a TYPEC interface. Its Bluetooth function supports operations such as parameter configuration, data export / printing, etc. It supports two power supply methods: battery and external power supply, enabling more application scenarios. The battery life can last up to 2 years. It has a storage capacity of 100,000 points. It has various practical functions such as over-limit record alarm, sound and light alarm, shadow data, etc., and is widely used in fixed scenarios such as refrigerators, cold storage cabinets, freezers, and refrigerators in various industries.

Features

- Supports Bluetooth mobile phone operation, parameter configuration, data query / export, and printing
- Supports dual-channel, temperature and humidity free combination
- Supports various power supply schemes, including lithium battery, dry battery, and TYPEC power supply
- Sound and light alarm, automatically shortens the record interval, recording the temperature changes of the over-limit history
- Backward magnetic suction design, no installation required, can be installed on refrigerators, metal shelves, etc

Model List

Configuration	THE	TE+THE	Gle+THE	Gle	GTDE	TLE
Probe Type	Ext. T & H	Ext. T & T-H	Ext. Gel Bottle & Ext. T-H	Ext. Single Gel Bottle	Ext. Double Gel Bottle	Ext. Ultra Low T
Temperature Range	Ext. -40°C~85°C					Ext. -196°C~150°C
Temperature Accuracy	±0.5°C (-40°C~85°C) ; ±1°C (-100°C~150°C) ; ±2°C (Others)					
Temperature Resolution	0.1°C					
Humidity Range	0%~100%			/		
Humidity Accuracy	±5%RH			/		
Humidity Resolution	0.1%RH			/		

Specification

Memory Capacity	100000	Weight	170.6g
Data Interface	Type-C	Working Environment	-30°C~50°C
Communication	TYPE-C Interface / Bluetooth	Button	Home Button
Protection Class	IP64	Alarm Method	Buzzer
Dimension	118.8×64.6×19.6mm	Installation Method	Magnetic
Battery Type	3.6V lithium battery / 1.5V dry battery / 5-cell battery / external power supply via TYPEC port / AA battery		

Reusable Data Logger Tlog 100



Reusable Data Logger Tlog 10



Overview

The Tlog 100 is a high-precision Reusable Data Logger with high measurement accuracy and good sealing performance. It has an LCD screen and an anti-accidental touch sinking button design. There are ordinary USB models and Bluetooth USB models to choose from. It supports built-in single temperature / temperature / humidity, external single temperature / temperature / humidity, external ultra-low temperature and other probes to choose from. PDF reports can be automatically generated, and reports can also be exported through data center software. Bluetooth models can also be exported through APP for product configuration and reports. It supports 32,000 sets of storage and 180 days of battery life. Widely used in refrigerated trucks, refrigerated boxes, cool cabinets, medical cabinets, laboratories and other scenarios.

Features

- High-precision sensor: imported from Sensirion, SHT31 top sensor, original precise adjustment
- Nano-scale packaging process: Nano-scale PTFE film is used to ensure the performance of the sensor while protecting the sensor from liquid and dust contamination
- New air cavity design: based on air flow, the air cavity design maintains the best thermal coupling with the surrounding environment and quickly senses the actual temperature of the environment
- Button groove design: to prevent bumps in the transportation of goods that cause the goods to squeeze the buttons and cause misoperation
- Multi-scenario use: USB, Bluetooth, dry ice, liquid nitrogen series to meet different environmental needs
- Safety and security: in line with the US FDA, UN38.0 NIST CE certification standards, traceability

Model List

Product Model	Tlog 100						Tlog B100		
	T	E	H	EH	EC	EL	H	EH	EC
Configuration	High-Precision Built In T	High-Precision External T	High-Precision Built In TH	High-Precision External TH	Ultra Low T	Ultra Low T	High-Precision Built In TH	High-Precision External TH	Ultra Low T
Probe Type	High-Precision Built In T	High-Precision External T	High-Precision Built In TH	High-Precision External TH	Ultra Low T	Ultra Low T	High-Precision Built In TH	High-Precision External TH	Ultra Low T
Temperature Range	-40°C~85°C				-100°C~150°C	-200°C~150°C	-40°C~85°C		-100°C~150°C
Temperature Accuracy	±0.3°C (-20°C~40°C) ; ±0.5°C (-50°C~85°C) ; ±0.1°C (-100°C~150°C) ; ±2°C (Others)								
Temperature Resolution	0.1°C								
Humidity Range	/	/	0~100%RH	/	/	/	0~100%RH	/	/
Humidity Accuracy	/	/	±3%RH	/	/	/	±3%RH	/	/
Humidity Resolution	/	/	0.1%RH	/	/	/	0.1%RH	/	/

Specification

Memory Capacity	32000	Protection Class	IP65
Data Interface	USB A	Dimension	115.5×47×16.2mm
Battery Type	CR2450	Weight	70g
Shelf Life	2 Years	Working Environment	-30°C~70°C
Communication	USB Port	Button	Start, Stop
Battery Life	180 Days (recording interval is 10min, room temperature, Bluetooth is not turned on)		

Overview

Tlog 10 is a high-precision Reusable Data Logger with high measurement accuracy and good sealing performance. It has an LCD screen and anti-accidental touch sinking button design. It supports built-in single temperature / temperature / humidity, external single temperature / temperature / humidity multiple probes to choose from. PDF reports can be automatically generated, and reports can also be exported through data center software. It supports 32000 sets of storage and 180 days of battery life. Widely used in refrigerated trucks, refrigerated boxes, cool cabinets, medical cabinets, laboratories and other scenarios.

Features

- Support High-precision sensor: imported from Sensirion, SHT31 top sensor, original precise adjustment
- Nano-scale packaging process: Nano-scale PTFE film is used to ensure the performance of the sensor while protecting the sensor from liquid and dust contamination
- Button groove design: to prevent bumps in the transportation of goods that cause the goods to squeeze the buttons and cause misoperation
- Safety and security: in line with the US FDA, UN38.0 NIST CE certification standards, traceability

Model List

Configuration	T	E	H	EH
Probe Type	Built In Temperature	External Temperature	Built In T&H	External T&H
Temperature Range	-40°C~85°C			
Temperature Accuracy	±0.5°C (-20°C~40°C) ; ±1°C (Others)		±0.5°C (-40°C~85°C) ; ±1°C (Others)	
Temperature Resolution	0.1°C			
Humidity Range	/		0~100%RH	
Humidity Accuracy	/		±3%RH (25°C, 20%RH~80%RH) ; ±5%RH (Others)	
Humidity Resolution	/		0.1%RH	

Specification

Memory Capacity	32000	Protection Class	IP65
Data Interface	USB A	Dimension	97×43×12.5mm
Battery Type	CR2450	Weight	About 60g
Shelf Life	2 Years	Working Environment	-30°C~70°C
Battery Life	180 Days (recording interval of 10 minutes, room temperature)	Button	Start, Stop
Communication	USB Port	Adaptation Software	ElitechLog

Waterproof Model Reusable USB Data Logger

RC 5/5+



Waterproof Model Reusable USB Data Logger

RC 51



Overview

RC 5/5+ is a small and portable repetitive recorder. Standard built-in single temperature sensor, USB A interface design, convenient data reading, can export reports through data center software, RC 5+ models can also automatically generate PDF files. All support IP67 protection, 32000 sets of storage, 180 days long battery life. Widely used in refrigerators, refrigerated trucks, freezers, food transportation, food processing and other scenarios

Features

- Comprehensive protection design: protection level up to IP67
- Low-power design: long battery life, 180-day long cycle record
- Screen intuitive display: LCD screen intuitive display running status, alarm status, record statistics and other information
- Multiple recording modes: button stop, software stop, full stop, loop recording

Model List

Product Model	RC 5		RC 5+	
Configuration	T	T	TE	
Probe Type	Built In Temperature	Built In Temperature	Built In Temperature + External Temperature	
Temperature Range	-30°C~70°C			
Temperature Accuracy	±0.5°C (-20°C~40°C) ; ±1°C (Others)			
Temperature Resolution	0.1°C			

Specification

Memory Capacity	32000
Data Interface	USB A
Battery Type	CR2032
Battery Life	180 Days (with a recording interval of 15 minutes)
Communication	USB Port
Protection Class	IP67
Dimension	80×33×14mm
Weight	25g
Working Environment	-30°C~70°C
Button	Start, Stop
Installation Method	Hanging Hole
Software	ElitechLog export PDF (RC 5) ; ElitechLog export + Automatic PDF generation (RC 5+)

Overview

RC 51 is a compact and portable pen-style reusable data logger. It comes standard with a built-in temperature and humidity sensor, featuring a USB Type-A interface for easy data reading. Reports can be exported via data center software, with automatic PDF generation supported. It has an IP67 protection rating, 32,000 sets of storage capacity, and an ultra-long 90-day battery life. It is widely used in scenarios such as refrigerated containers, refrigerated trucks, freezers, food transportation, and food processing.

Features

- Pen-style appearance design: unique appearance design
- Comprehensive protection design: protection level up to IP67
- Low-power design: long battery life, 90day long cycle record
- Automatically generates the secure PDF reports

Model List

Product Model	RC 51	RC 51H
Configuration	T	TH
Probe Type	Built In Temperature	Built In Temperature and Humidity
Temperature Range	-30°C~70°C	
Temperature Accuracy	±0.5°C (-20°C~40°C) ; ±1°C (Others)	
Temperature Resolution	0.1°C	
Humidity Range	/	10%RH ~ 95%RH
Humidity Accuracy	/	±5%RH
Humidity Resolution	/	0.1%RH

Specification

Memory Capacity	32000
Data Interface	USB A
Battery Type	CR14250 (disposable lithium-manganese battery 950mAh)
Battery Life	90 Days (15 mins log interval)
Communication	USB Interface
Protection Class	IP67
Dimension	131mm×7mm
Weight	50g
Working Environment	-30°C~70°C
Button	Home Button
Software	ElitechLog

Industrial Large Screen T&H Data Logger DR 230/230W



Industrial Large Screen T&H Data Logger RCW 360Plus



Overview

DR 230 / DR 230W is a large-screen Reusable Data Logger / Multi Use Real Time Data Logger. Standard host and temperature and humidity sensor. DR 230 is the Bluetooth version, DR 230W is the Wi-Fi version, users can configure, data read, PDF report export and other operations through mobile phone Bluetooth and Wi-Fi respectively. The host has 30,000 sets of local storage, supports local sound and light alarm, supports wall hanging, table setting and other installation methods, and large-size glass panel can display up to two temperature and humidity values. Widely used in production workshops, warehousing and other scenarios in various industries.

Features

- Dual-channel data display: large-size glass panel can display up to two temperature and humidity values
- Variety of communication methods: Bluetooth or Wi-Fi, two communication methods are optional
- Extreme simplicity and meticulous work: clear fonts, exquisite molds, delicate materials, hidden interfaces, and easy installation
- Large-capacity secure data storage: supports 30,000 sets of local data storage, supports circular storage, and power-off data will not disappear
- Support PDF report export: Support data generation as PDF file export

Model List

Product Model	DR 230		DR 230W	
	THE	THDE	THE	THDE
Configuration	External T&H	External Double T&H	External T&H	External Double T&H
Probe Type	External T&H	External Double T&H	External T&H	External Double T&H
Temperature Range	-40°C~85°C			
Temperature Accuracy	±0.5°C (-40°C~85°C); ±1°C (Others)			
Temperature Resolution	0.1°C			
Humidity Range	0%RH~95%RH			
Humidity Accuracy	±5%RH			
Humidity Resolution	0.1%RH			

Specification

Storage capacity / strip	30000	Working Environment	-10°C~45°C
Communication	Bluetooth (DR 230); WiFi (DR 230W)	Alarm Method	Screen flicker, External sound and light alarm (Optional)
Dimension	215×165×19mm	Installation Method	Wall hanging, table bracket
Weight	244g	Adaptation Software	WeChat Mini Program, Elitech iCold APP Elitech Cold Web (DR 230W)

Overview

RCW 360Plus is a repeatability real-time data logger that supports 4G and Wi-Fi with replacable probes. The probes is with aviation connectors and support various configurations such as single / double temperature, temperature and humidity, gel, and ultra-low temperature. Through the Elitech cloud software configuration, up to 5 sets of data can be displayed simultaneously, enabling remote data viewing. It has IP65 dust proof and water proof performance, a storage capacity of 100,000 points, multiple alarm, supports local and remote alarms, and comes with a standard installation bracket. It is widely used in various scenarios such as freezers, refrigerators, cold storage cabinets, and greenhouses in various industries.

Features

- Supports both 4G and dual-band Wi-Fi, supports global communication, and deployment of the product is not restricted by network coverage
- The sensor uses replacable aviation connectors
- Rechargeable lithium battery, data can be recorded / uploaded normally even after power failure for 20 days
- 100,000 points of large storage capacity, data will not be lost
- Standard installation bracket, supports magnetic, screw, etc. fixation methods, installation is simple, and the application scenarios are more diverse

Model List

Configuration	THE	TE	TDE	GLE	TLE
Probe Type	External T & H	External single T	External dual T	External Gel Bottle	External Ultra Low T
Temperature Range	-40°C~85°C				-200°C~150°C
Temperature Accuracy	±0.5°C (-40°C~85°C); ±1°C (-100°C~150°C); ±2°C (Others)				
Temperature Resolution	0.1°C				0.1°C
Humidity Range	0~100%RH				/
Humidity Accuracy	±5%RH				/
Humidity Resolution	0.1%RH				/

Specification

Memory Capacity	100000	Working Environment	-20°C~60°C
Data Interface	Type-C	Button	Four Buttons: Power / Start / Menu / Exit
Communication	Wi-Fi + 4G	Alarm Method	LED, Buzzer
Location Mode	Standard: LBS Optional: GPS	Installation Method	Hanging / Magnetic Holder
Protection Class	IP65	Other Probe	Fiber Optic Radiation Sensor
Dimension	109×69.4×22.9mm	Range	0~52000Lux
Weight	240g	Resolution	1Lux
Battery	3.7V Rechargeable Lithium Battery with 4000mAh Capacity; 5V 2A Power Supply		
Battery Life	20 Days (with 5-minute upload intervals); 7 Days (with 5-minute upload intervals + GPS)		

Split-type LoRa Master-Slave Units Real Time Data Logger

RCW 3000



Wi-Fi Real Time Data Logger

RCW 800W



Overview

The RCW 3000C is a split-type recorder with a main gateway and slave units. It uses Lora, 4G, or Wi-Fi for communication and connects to the Jingchu Cold Cloud Platform or mobile app for real-time / historical data, alerts, and remote monitoring. Optional slave units (temperature / humidity, door magnet, etc.) can be added, with up to 30 slaves per master over 1000m. Featuring self-adhesive, card tray, or hanging hole mounting, it's ideal for cold chain environments like warehouses, supermarkets, hospitals, and refrigerated displays.

Features

- Wireless deployment: Main unit: 4G + Wi-Fi, Sub-unit: LoRa. No need for punching holes or wiring. Installation is portable
- Ultra-long battery life: The sub-device can last up to 12 months
- Large-scale deployment: Lora communication can reach up to 1000 meters at its best
- Customizable functions: 4G / Wi-Fi / Network port / Screen, etc. for varied environments

Model List

Product Model	RCW 3000 (Gateway)		RCW 3000C		
Communication Method	4G, Wi-Fi, Ethernet (Optional)		Wi-Fi, Downlink LoRa		
Product Model	RCW 3200 (Device)		RCW 3300		RCW 3400
Product Configuration	TH	THE	T + Cle	DMSW	TH
Probe Type	Built In T&H	External T&H	Built In Single T + Gel Bottle	Door Magnetic Probe	Built In T&H
Temperature Range	-30°C~70°C		-30°C~70°C	10mm	-30°C~70°C
Temperature Accuracy	±0.5°C (-40°C~85°C) ; ±1°C (Others)		/	/	±0.5°C (-40°C~85°C) ; ±1°C (Others)
Temperature Resolution	0.1°C		/	/	0.1°C
Humidity Range	0~100%RH		/	/	0~100%RH
Humidity Accuracy	±5%RH		/	/	±5%RH
Humidity Resolution	0.1%RH		/	/	0.1%RH

Specification

Product Model	RCW-3200	RCW-3300	RCW 3400
Storage Capacity / Strip	32000		10000
Data Interface	MicroUSB		TYPEC
Battery Type	3.7V 4000mAh Li-ion	Dry Cell 7000mAh	3.7V 4000mAh Li-ion
Battery Life	Not less than 1 year	5 Years	1 Years
Communication		Lora	
Protection Class	IP65 (TH) , IP64 (THE)	IP67	IP65
Dimension	110×70×18mm	115×70×20.5mm	106×59×13mm
Weight	160g	135g	70g
Working Environment	-20°C~60°C 5%RH~95%RH		-30°C~60°C
Installation Method	Wall Mount / Magnetic Bracket	Adhesive Backing, Bracket	Hanging Hole
Software	ElitechCold, ElitechCold APP		

Overview

RCW 800W is a Multi Use Real Time Data Logger that supports both Wi-Fi and detachable probes. The probe uses a headphone plug and supports configurations like dual-temperature, temperature / humidity, or temperature / humidity + water immersion. It displays up to 2 data sets simultaneously via Elitech iCold APP for remote viewing. Features include 20,000-record storage, local / remote alarms, and a standard mounting bracket. Widely used in freezers, refrigerators, greenhouses, and similar scenarios.

Features

- Rich display: large size TFT color screen display
- Stable connection: The sensor uses a removable aviation plug
- Real-time monitoring: Dual-band Wi-Fi, supports real-time data monitoring
- Durable battery life: rechargeable lithium battery, data can be recorded / uploaded normally for 7 days after power failure

Model List

Configuration	TDE	THE
Probe Type	External Double Temperature	External Temperature and Humidity
Temperature Range	-40°C~85°C	
Temperature Accuracy	±0.5°C (-40°C~85°C) ; ±1°C (Others)	±0.5°C (-40°C~85°C) ; ±1°C (Others)
Temperature Resolution	0.1°C	0.1°C
Humidity Range	/	0%RH~100%RH
Humidity Accuracy	/	±5%RH
Humidity Resolution	/	0.1%RH

Specification

Memory Capacity	20000	Weight	251g
Data Interface	Type-C	Working Environment	-10°C~45°C
Battery Type	3.7V Rechargeable Lithium Battery 1800mAh	Button	Switch Machine, Distribution, Left, Home, Right, °C / °F Switch, Start / Stop, On / Off
Battery Life	7 Days (5mins upload interval)	Alarm Method	LED, Buzzer
Communication Mode	WiFi	Installation Method	Magnetic Mounting Bracket
Dimension	110×78×27mm	Adaptation Software	Elitech iCold APP, Elitech iCold Web

Portable Temperature and Humidity Monitoring Solution

lotLog 260



Disposable Temperature Recording Label

EliTag XS



Overview

lotLog 260 is a Multi Use Real Time Data Logger that supports global 4G communication, supporting various sensors such as temperature, humidity, light, vibration, positioning, etc. It can view data in real time through the Elitech iCold platform, support flight mode and electronic fence, three-color indicator lights and LCD screen can visually display the current status, and support shadow data and automatic generation of PDF reports. Widely used in containers, refrigerated containers, refrigerated trucks and other cold chain transportation scenarios in various industries.

Features

- Multi-source sensing: temperature, humidity, lighting, vibration, positioning, and other data
- 24-Hour remote data viewing: 4G global communication, real-time monitoring data
- Flight Mode / Electronic Fence: Custom Area Open, Manual Open, Timed Open, Electronic Fence
- Three-color indicator light + LCD screen: real-time visual display of device status
- Shadow data: Device forgets to turn on or stops by mistake, passively records data to ensure data integrity
- Support for automatically generating PDF reports

Model List

Configuration	T	TH	TE	THE	TLE
Probe Type	Built In T	Built In T&H	External T + Built In T	External T&H + Built In T	External Ultra Low T + Built In T
Temperature Range	-30°C~70°C		Built In: -30°C~70°C External: -40°C~85°C	Built In: -30°C~70°C External: -200°C~150°C	
Temperature Accuracy	±0.5°C (-40°C~85°C); ±1°C (-100°C~150°C); ±2°C (Others)				
Temperature Resolution	0.1°C				
Humidity Range	/	0~100%RH	/	0~100%RH	/
Humidity Accuracy	/	±5%RH	/	±5%RH	/
Humidity Resolution	/	0.1%RH	/	0.1%RH	/
Other Probe	Light Sensor, Accelerometer				

Specification

Memory Capacity	100000	Dimension	103×61.3×30mm
Data Interface	TYPE-C	Weight	140g
Battery Type	3.7V Rechargeable Lithium Battery 3000mAh	Working Environment	-30°C~60°C
Battery Life	30 Days	Button	Flight, Start
Communication Model	Type-C Interface, 4G	Alarm Method	LED, Remote (SMS, official account, email, voice, APP)
Location Mode	LBS / GPS	Installation Method	Hanging
Protection Class	IP65	Adaptation Software	Elitech iCold APP, Elitech iCold Web

Overview

EliTag series digital temperature tag is an ultra-thin digital temperature tag with RFID function. Standard built-in single temperature sensor, 3m adhesive design, can be easily pasted on the surface of the monitor, is the smallest unit packaging temperature monitoring solution product. With hard shell version, flexographic version, large area and other types. With its own RFID radio frequency function, it can easily read data from mobile phones, RFID PDA, RFID fixed readers, and generate PDF reports through the Elitech iCold APP. Widely used in food and drug storage and transportation, such as refrigerated boxes, refrigerated trucks, containers and other scenarios.

Features

- Ultra-thin design: ultra-thin surface sticker, which can be attached to the surface of any monitor
- Simple operation: The mobile APP can complete the start, end, data reading and other operations
- A variety of configurations are available: hard shell version, flexible version, large area and other types
- Batch read data: RFID UHF version can read data in batches

Model List

Product Model	EliTag 2S	EliTag 3S
Configuration	T	
Probe Type	Built In Temperature	
Temperature Range	-30°C~60°C	-30°C~50°C
Temperature Accuracy	±0.5°C (-20°C~40°C), ±1°C (Others)	±0.5°C (-20°C~40°C), ±1°C (Others)
Temperature Resolution	0.1°C	0.1°C

Specification

Product Model	EliTag 2S	EliTag 3S
Memory Capacity	3840	4864
Battery Type	CR2032	1.5V Paper Battery
Shelf Life	2 Years	
Battery Life	3 Years (1 min recording interval, 25°C environment, LED disabled)	90 Days (30 minutes recording interval)
Communication	NFC	NFC, RFID
Protection Class	IP54	IP65
Dimension	40×57×5.5mm	82.8×54.2×1.4mm
Weight	10g	3.9g
Working Environment	-30°C~60°C	-30°C~50°C
Button	State	/
Alarm Method	LED	/
Installation Method	3M Adhesive Backing	
Software	Elitech iCold APP	

